

FAILURE TO FOLLOW THESE INSTRUCTION WILL VOID ANY WARRANTY

INSTALLATION

CAUTION: Inspect valve for shipping damage. Also make sure inside of valve is free of shipping materials and that the flapper functions freely. Make sure to check this by lifting the lever arm (disc/flapper assembly). Installation of model 93LW must be performed by qualified, licensed personnel. Faulty installation could result in an improperly functioning device.

Correct installation of the 93LW is important for proper operation. It may be installed in either the horizontal or vertical positions. However, if vertical installation is required it must be specified on the PO or the valve lever and weight will be set for horizontal installation. In all installations, the flow arrow cast on the valve must be pointed in the direction of flow during normal system operation.

Flanged valves should only be mated with flat-faced pipe flanges equipped with full faced resilient gaskets. The valve and adjacent piping must be supported and aligned to prevent cantilevered stress on the valve. Once the flange bolts or studs are lubricated and inserted around the flange, tighten them uniformly hand tight. The tightening of the bolts should then be done in graduated steps using the crossover tightening method. If leakage occurs, allow gaskets to absorb fluid and check bolt torque and leakage after 24 hours. Do not exceed bolt rating or extrude gasket.

Proper performance depends upon following these installation instructions and prevailing governmental and industry standards and codes. Failure to do so releases Flomatic of any liability that it might otherwise have with respect to that device. **NOTICE:** The 93LW Check Valve requires no scheduled lubrication or maintenance. For service or inspection the valve can be serviced without removal from the line. If inspection of the valve is required, follow the disassembly instructions

To re-set the lever and weight for valve installation in vertical installation:

1. Remove the weight (part # 18) from the lever arm.
2. Remove the lever bolt (part #22) and the lever nut (part # 23) from the valve shaft.
3. Pull the lever (part #19) away from the hinge pin nut (part #24) and rotate lever arm clockwise until it is horizontal or slightly lower than horizontal.
4. Push lever arm into coupling making sure lever arm mating spline fits into coupling groove.
5. Replace lever bolt (part #22) and lever nut (part # 23).

DISASSEMBLY

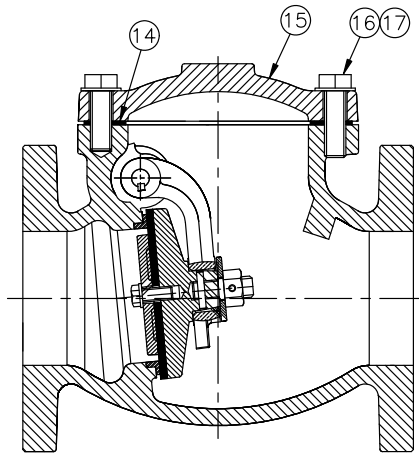
The valve can be disassembled without removing it from the line. Or for convenience, the valve can be removed from the line. All work on the valve should be performed by a qualified licensed personal with proper tools and a power hoist for larger valves. Disassembly may be required to inspect the disc for wear or the valve for debris.

1. Relieve pressure and drain the line (or isolate the valve by closing upstream and downstream shut-off valves).
2. Remove the cover bolts and washers on the top cover (part # 16 and 17).
3. Remove the cover and cover gasket (part # 10 and 14)
4. Remove disc/flapper assembly by lifting out of the valve and inspect for cracks, tears or damage in rubber sealing surface.

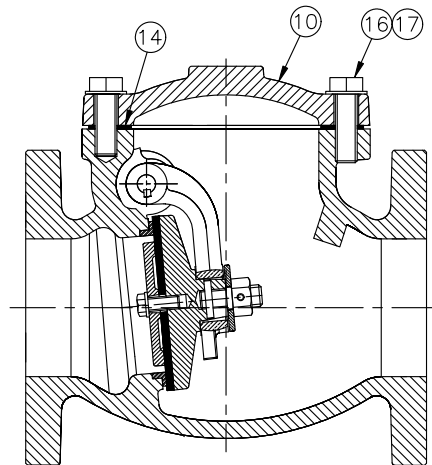
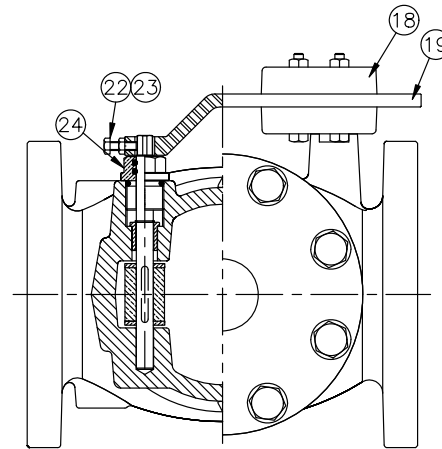
- Clean and inspect parts. Replace worn parts as necessary and lubricate parts with FDA grease such as Lubriko #CW-606.

RE-ASSEMBLY

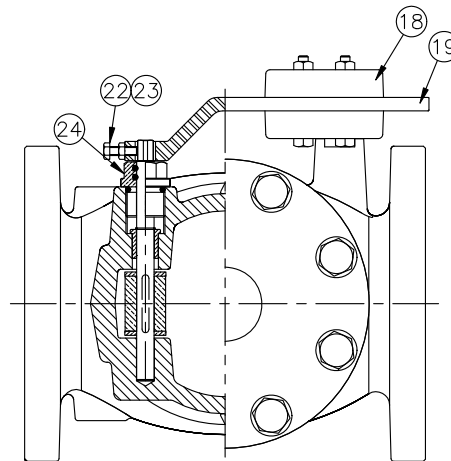
All parts must be cleaned. Gasket surfaces should be cleaned with a stiff wire brush in the direction of the serrations or machine marks. Worn parts, gaskets and seals should be replaced during reassembly. Reassemble the valve in reverse order of the disassembly instructions.



Size 2" thru 6" / 25mm thru 150mm



Size 8" thru 12" / 200mm thru 300mm



Parts and service are available from your local representative or the factory. These valves are not for potable water.

1 Year Limited Warranty: Flomatic valves are guaranteed against defects of materials or workmanship when used for the services recommended. If in any recommended service, a defect develops due to material or workmanship, and the device is returned, freight prepaid, to Flomatic Corporation within 12 months from the date of purchase, it will be repaired or replaced free of charge. Flomatic Corporations' liability shall be limited to our agreement to repair or replace the valve only.